



PROPOR TFF reusable

- tangential flow filtration
- modified polyethersulphone hollow fibre cartridges

PROPOR TFF reusable hollow fibre filters provide maximum process performance and high product yield through the use of advanced low fouling modified PES membrane technology, while also allowing for more efficient post-use module cleaning.

High flux, low fouling and low binding modified PES hollow fibre membrane technology offers consistent and fully scaleable performance in a broad range of applications.

PROPOR TFF reusable filters are also completely caustic stable, allowing the filter to be repeatedly cleaned, sanitized and stored throughout the duration of a long service life without risk to product integrity.

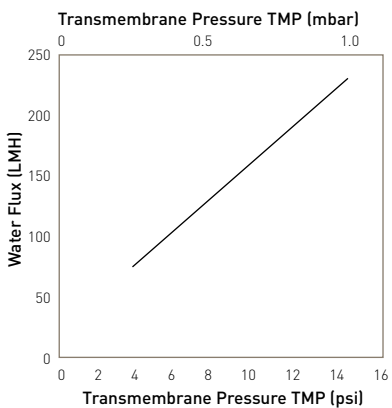
Features and Benefits

- High flux, low fouling modified PES membrane for exceptional performance
- Self-contained hollow fibre filters - no hardware, no installation
- 100% integrity tested
- Robust, caustic-stable materials of construction allow repeated chemical cleaning, sanitization and storage cycles

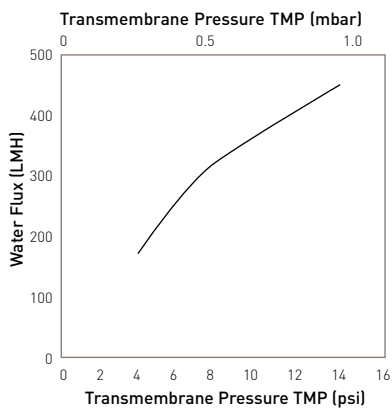


Note: PROPOR is a registered trademarks of Parker Hannifin Corporation.

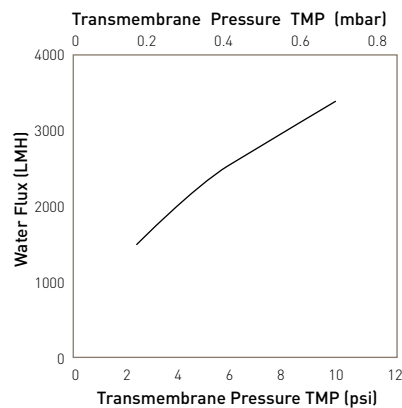
Performance Characteristics



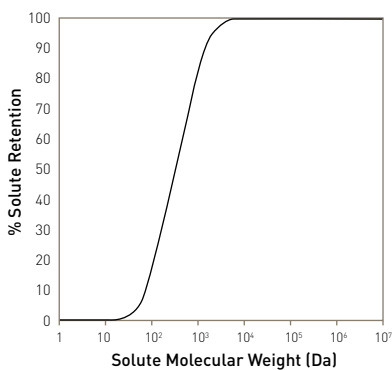
Clean water flux for a 12" PilotPlus 30K MWCO, 1.0mm ID



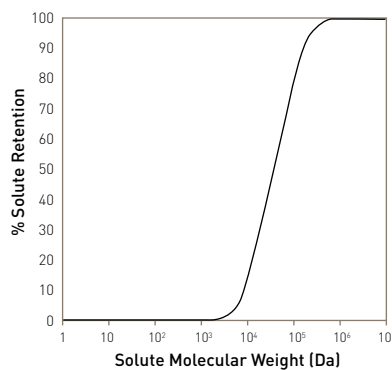
Clean water flux for a 12" PilotPlus 300K MWCO, 1.0mm ID



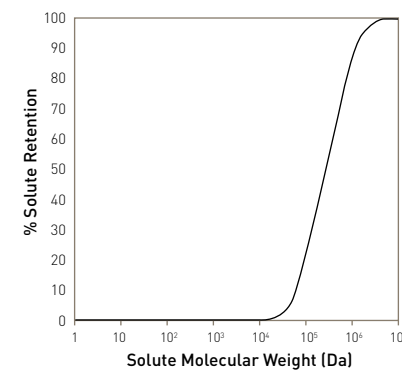
Clean water flux for a 12" PilotPlus 0.2 micron, 1.0mm ID



30K MWCO membrane solute retention



300K MWCO membrane solute retention



0.2 micron membrane solute retention

Typical Batch Sizes & Flow Rates by Product Format

Cartridge Type	Recommended Crossflow Rate (L/min)*	12 inch Fibre Length		24 inch Fibre Length		41 inch Fibre length	
		Recommended Batch Volume (L)	Recommended Permeate Flow Rate (L/h)	Recommended Batch Volume (L)	Recommended Permeate Flow Rate (L/h)	Recommended Batch Volume (L)	Recommended Permeate Flow Rate (L/h)
Lab	0.050 to 0.075	0.01 to 0.08	up to 0.05	0.01 to 0.125	up to 0.1	N/A	N/A
LabPlus	0.150 to 0.225	0.01 to 0.25	up to 0.125	0.05 to 0.4	up to 0.25	N/A	N/A
LabMax	0.50 to 0.70	0.15 to 0.75	up to 0.4	0.25 to 1.5	up to 0.8	0.3 to 3.0	up to 1.5
Pilot	1.5 to 2.1	0.4 to 2.0	up to 1.4	0.7 to 4.0	up to 2.5	1.0 to 8.0	up to 5.0
PilotPlus	4 to 6.5	1.0 to 6.0	up to 3.0	2.0 to 12.0	up to 6.0	3.0 to 25.0	up to 12.0
ProductionMini	15 to 20	5.0 to 50.0	up to 20.0	10.0 to 100.0	up to 40.0	25.0 to 200.0	up to 100.0
Production	30 to 40	25.0 to 100.0	up to 30.0	50.0 to 250.0	up to 70.0	100.0 to 500.0	up to 150.0
ProductionMax	60 to 80	N/A	N/A	100.0 to 500.0	100.0 to 500.0	300.0 to 1000.0	300.0 to 1000.0

* Typical range based on 1 mm lumen diameter

