



PROPOR TFF autoclaveable

- tangential flow filtration
- modified polyethersulphone hollow fibre cartridges

PROPOR TFF autoclaveable hollow fibre filters provide maximum cross-flow performance with minimal preparation and installation time while also allowing the flexibility of autoclave sterilization.

High flux, low fouling and low binding modified PES hollow fibre membrane technology offers consistent and fully scaleable performance in a broad range of applications.

PROPOR TFF autoclaveable filters are supplied glycerin-free ready to use without the need for extensive pre-flushing.

Extremely robust, high performance advanced proprietary membrane chemistry offers long module lifetime with sustained high flux and productivity over prolonged periods of usage, such as in perfusion applications.

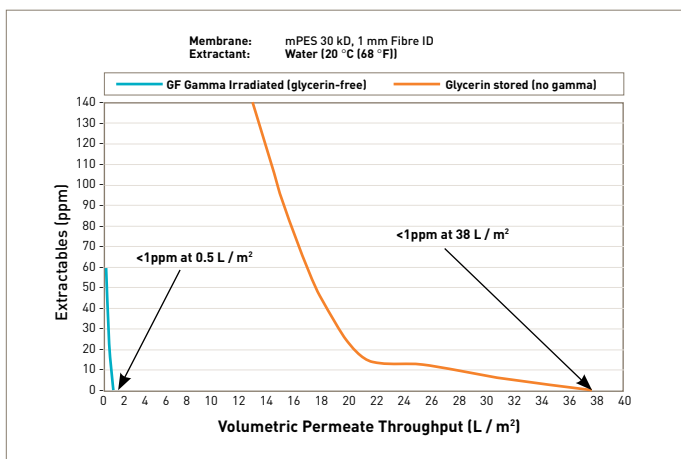
Features and Benefits

- Ready to use cross flow filtration - no pre-rinse required
- Up to 80x reduction in extractables compared to glycerin conditioned membranes
- High flux, low fouling modified PES membrane for exceptional performance
- No cleaning required
- Self-contained hollow fibre filters - no hardware, no installation
- 100% integrity tested
- Able to be sterilized by autoclaving



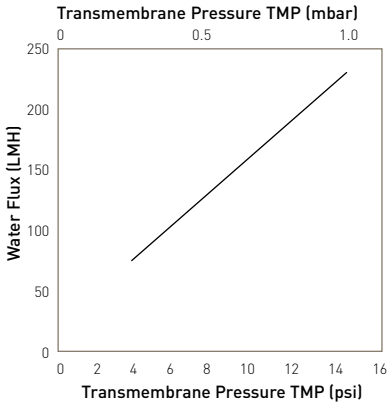
Note: PROPOR is a registered trademarks of Parker Hannifin Corporation.

PROPOR TFF autoclaveable filters offer minimal extractable levels with no water flush

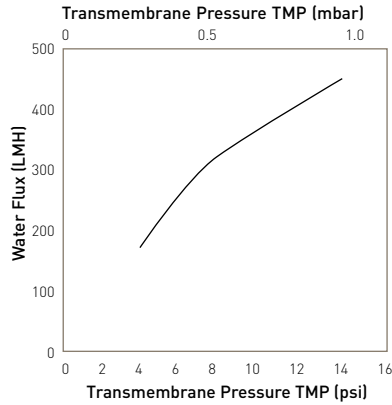


Extractable flush analysis: glycerin-free vs glycerin stored

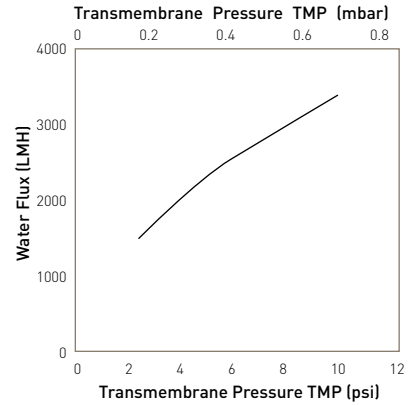
Performance Characteristics



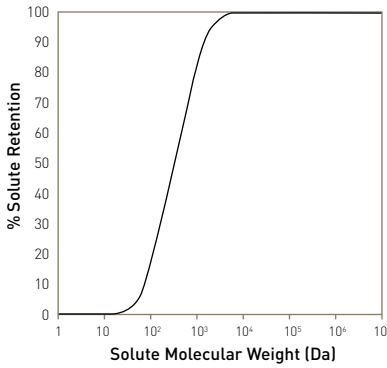
Clean water flux for a 12" PilotPlus 30K MWCO, 1.0mm ID



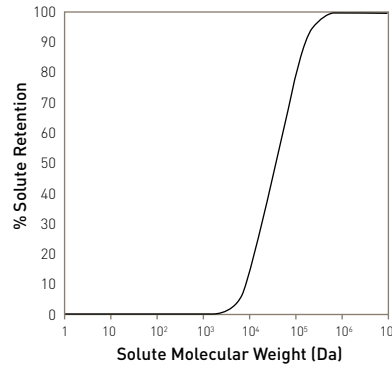
Clean water flux for a 12" PilotPlus 300K MWCO, 1.0mm ID



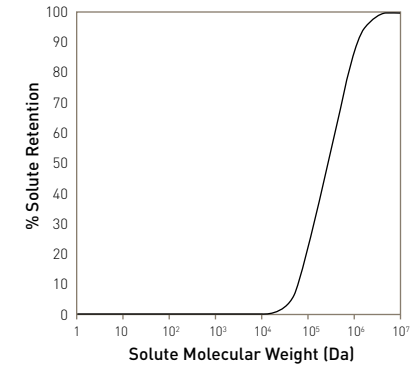
Clean water flux for a 12" PilotPlus 0.2 micron, 1.0mm ID



30K MWCO membrane solute retention



300K MWCO membrane solute retention



0.2 micron membrane solute retention

Typical Batch Sizes & Flow Rates by Product Format

Cartridge Type	12 inch Fibre Length		24 inch Fibre Length		41 inch Fibre length	
	Recommended Batch Volume (L)	Recommended Permeate Flow Rate (L/h)	Recommended Batch Volume (L)	Recommended Permeate Flow Rate (L/h)	Recommended Batch Volume (L)	Recommended Permeate Flow Rate (L/h)
LabPlus	0.01 to 0.25	up to 0.125	0.05 to 0.4	up to 0.25	N/A	N/A
LabMax	0.15 to 0.75	up to 0.4	0.25 to 1.5	up to 0.8	0.3 to 3.0	up to 1.5
Pilot	0.4 to 2.0	up to 1.4	0.7 to 4.0	up to 2.5	1.0 to 8.0	up to 5.0
PilotPlus	1.0 to 6.0	up to 3.0	2.0 to 12.0	up to 6.0	3.0 to 25.0	up to 12.0
Production	25.0 to 100.0	up to 30.0	50.0 to 250.0	up to 70.0	100.0 to 500.0	up to 150.0

Specifications

Materials of Construction

- Membrane: Modified glycerin-free polyethersulphone (PES)
- Internal Screens: Polypropylene
- Encapsulant: FDA compliant urethane
- Housing: White polysulphone

Sterilization

All PROPOR TFF autoclaveable hollow fibre filters are supplied pre-irradiated to prevent the requirement for use of an antimicrobial agent post-manufacture.

Filters are designed to be sterilized through additional autoclave cycles, and are validated to withstand up to 5 x 30 minute cycles at a maximum temperature of 121 °C (249.8 °F).

Compliance / Biological Safety

All materials of construction meet USP Class VI and Physiochemical Test For Plastics standards, and are compliant with FDA 21CFR parts 175 – 177 as relevant to the appropriate material type.

Quality Standards

All materials used in the construction of Parker domnick hunter hollow fibre filters are 100% lot traceable.

All membrane lots are tested to ensure conformity with retention, permeability and water flux specifications. All finished filters are tested for clean water flux, and cartridge / fibre integrity post manufacture.

Shelf-Life

Under recommended conditions (refer to product validation guide) unused PROPOR TFF filters can be stored for a period of up to 24 months following the date of manufacture without affecting product performance.

Product Dimensions & Membrane Area

Cartridge Type	Number of Fibres*	12 inch Fibre Length		24 inch Fibre Length		41 inch Fibre length	
		EFA (cm ²)	Nominal Module Dimensions (dia. x length) (mm)	EFA (cm ²)	Nominal Module Dimensions (dia. x length) (mm)	EFA (cm ²)	Nominal Module Dimensions (dia. x length) (mm)
LabPlus	6 or 12	52 cm ²	9 x 300	107 cm ²	9 x 600	N/A	N/A
LabMax	18 or 36	155 cm ²	13 x 312	320 cm ²	13 x 605	580 cm ²	13 x 1062
Pilot	54 or 108	444 cm ²	33 x 311	940 cm ²	33 x 597	0.17 m ²	33 x 1061
PilotPlus	160 or 320	0.13 m ²	33 x 305	0.20 m ²	33 x 597	0.50 m ²	33 x 1054
Production	1600 or 3200	1.25 m ²	89 x 381	2.72 m ²	89 x 673	5.00 m ²	89 x 1130

* Dictated by fibre lumen diameter (1.0 mm / 0.5 mm).

Recommended Operating Conditions

Membrane Type	Maximum Feed Pressure		Maximum Transmembrane Pressure (TMP)		Maximum Temperature		pH Range
	barg	psig	barg	psig	° C	° F	
5K - 100K MWCO	2.76	40	2.41	35	60	140	2 to 13.5
300K - 500K MWCO	2.07	30	1.72	25	50	122	2 to 13.5
750K MWCO	1.72	25	1.38	20	50	122	2 to 13.5
0.1 µm	1.38	20	1.03	15	40	104	2 to 13.5
0.2 µm	1.03	15	0.69	10	40	104	2 to 13.5
0.45 µm	1.03	15	0.69	10	40	104	2 to 13.5

Ordering Information



Code Length (Nominal)*	Code NMWC* / Micron Rating	Code Diameter	Code Cartridge Type	Connector Type			Code Pack Quantity*
				Code Feed/Retentate	Permeate	Availability	
1 12 inch 304.8 mm	003 3 kDa	10 1 mm	LP LabPlus	LL Luer Lock	Luer Lock	LabPlus	3 3
2 24 inch 609.6 mm	005 5 kDa	05 0.5 mm	LX LabMax	05 1/2 inch TC	3/16 inch Barbed Hose	LabMax	6 6
3 41 inch 1041.4 mm	010 10 kDa		PL Pilot	07 3/4 inch TC	3/8 inch Barbed Hose	Pilot	0 12
	030 30 kDa		PP PilotPlus	15 1 1/2 inch TC	1/2 inch TC / 1 inch TC	PilotPlus/Production	
	050 50 kDa		PR Production			Production	
	100 100 kDa			30 3 inch TC	1 inch TC	Production	
	300 300 kDa						
	500 500 kDa						
	750 750 kDa						
	910 0.1 µm						
	920 0.2 µm						
	945 0.45 µm						

*Nominal hollow-fibre length only, exact module dimensions vary by specific product format.

*NMWC = Nominal molecular weight cut-off



FILCO spol. s r.o.
 Dvorská 464/103, CZ-503 11 Hradec Králové, tel.: +420 495 436 233, info@filco.cz, www.filco.cz
 Europe: ☎ +44 (0)191 4105121 ✉ dhpsales.na@parker.com - North America: ☎ +1 608 824 0500 ✉ dhpsales.na@parker.com www.parker.com/dpharma

Parker domnick hunter has a continuous policy of product development and although the Company reserves the right to change specifications, it attempts to keep customers informed of any alterations. This publication is for general information only and customers are requested to contact our Process Filtration Sales Department for detailed information and advice on a products suitability for specific applications. All products are sold subject to the company's Standard conditions of sale.